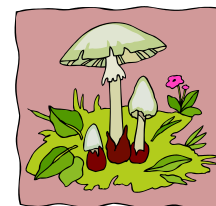


**COPPETT HILL**

23-10-2011

Species recorded by the  
Herefordshire Fungus Survey  
Group



NAME	LATIN NAME	SUBSTRATE / HOST
<b>Spore droppers: Agarics (toadstools – gilled fungi)</b>		
Inky Mushroom	<i>Agaricus moelleri</i>	Litter / Broad-leaved tree
	<i>Clitocybe clavipes</i>	litter Broad-leaved tree
Trooping Funnel	<i>Clitocybe geotropa</i>	litter Broad-leaved tree
Blueleg Webcap	<i>Cortinarius amoenolens</i>	soil Beech.
Peeling Oysterling	<i>Crepidotus mollis</i>	fallen branch Ash
	<i>Cystolepiota adulterina</i>	litter Broad-leaved tree
	<i>Cystolepiota aspera</i>	litter Broad-leaved tree
	<i>Cystolepiota sistrata</i>	litter Broad-leaved tree
	<i>Gymnopus confluens</i>	litter Broad-leaved tree
	<i>Gymnopus dryophilus</i>	litter Broad-leaved tree
Golden Waxcap	<i>Hygrocybe chlorophana</i>	soil Graminae
Slimy Waxcap	<i>Hygrocybe irrigata</i>	soil Graminae
Maedow Waxcap	<i>Hygrocybe pratensis</i>	soil Graminae
Parrot Waxcap	<i>Hygrocybe psittacina</i>	soil Graminae
Crimson Waxcap	<i>Hygrocybe punicea</i>	soil Graminae
Yellowing Waxcap	<i>Hygrophorus discoxanthus</i>	litter Beech
Sulphur tuft	<i>Hypholoma fasciculare</i>	stump Broad-leaved tree
White Fibrecap	<i>Inocybe geophylla</i>	soil Broad-leaved tree
Amethyst deceiver	<i>Laccaria amethystina</i>	litter Broad-leaved tree
Deceiver	<i>Laccaria laccata</i>	litter Broad-leaved tree
Oakbug Milkcap	<i>Lactarius quietus</i>	soil Oak.
Mild Milkcap	<i>Lactarius subdulcis</i>	soil Broad-leaved tree
	<i>Marasmius cohaerens</i>	litter Broad-leaved tree
Collared Parachute	<i>Marasmius rotula</i>	litter Broad-leaved tree
Common Cavalier	<i>Melanoleuca polioleuca</i>	litter Indeterminate
Angel's Bonnet	<i>Mycena arcangeliana</i>	fallen branch Broad-leaved tree
Common Bonnet	<i>Mycena galericulata</i>	fallen branch Broad-leaved tree
Grooved Bonnet	<i>Mycena polygramma</i>	fallen branch Broad-leaved tree
Beech Jellydisc	<i>Mycena pura</i>	litter Broad-leaved tree
Rosy Bonnet	<i>Mycena rosea</i>	litter Broad-leaved tree
Bark Bonnet	<i>Mycena speirea</i>	fallen twig Broad-leaved tree
Snapping Bonnet	<i>Mycena vitilis</i>	litter Broad-leaved tree
Veiled Oyster	<i>Pleurotus dryinus</i>	trunk Broad-leaved tree
Willow Shield	<i>Pluteus salicinus</i>	fallen branch Broad-leaved tree
Purple Brittlegill	<i>Russula atropurpurea</i>	soil Broad-leaved tree
Ochre Brittlegill	<i>Russula ochroleuca</i>	soil Broad-leaved tree
Rancid Greyling	<i>Tephrocybe rancida</i>	litter Broad-leaved tree
Girdled Knight	<i>Tricholoma cingulatum</i>	soil Willow
<b>Spore droppers: brackets, puffballs, clubs</b>		
Blushing Rosete	<i>Abortiporus biennis</i>	fallen branch Broad-leaved tree
Smoky Bracket	<i>Bjerkandera adusta</i>	fallen branch Ash
Yellow Club	<i>Clavulinopsis helvola</i>	soil Graminae
Blushing bracket	<i>Daedaleopsis confragosa</i>	fallen branch Willow
Puff ball	<i>Lycoperdon pyriforme</i>	fallen branch Broad-leaved tree
	<i>Peniophora quercina</i>	fallen branch Broad-leaved tree

Jelly Rot	Phlebia tremellosa	fallen branch Broad-leaved tree
Birch Polypore / Razorstrop Fungus	Piptoporus betulinus	fallen trunk Birch
	Polyporus badius	fallen branch Beech
<b>Dryad`s saddle</b>	Polyporus squamosus	stump Sycamore
Split Porecrust	Schizopora paradoxa	fallen branch Oak.
Common Earthball	Scleroderma citrinum	litter Broad-leaved tree
Hairy Curtain Crust	Stereum hirsutum	fallen branch Broad-leaved tree
Hairy Curtain Crust	Stereum hirsutum	fallen branch Birch
	Thelephora spiculosa	litter Broad-leaved tree
Lumpy Bracket	Trametes gibbosa	fallen branch Ash
Turkeytail	Trametes versicolor	fallen trunk Broad-leaved tree
<b>Spore shooters: discs, cups, black knobs &amp; spots etc.</b>		
Lemon Disco	Bisporella citrina	fallen branch Broad-leaved tree
Black Bulgar	Bulgaria inquinans	fallen branch Broad-leaved tree
Ergot	Claviceps purpurea	inflorescence Graminae
King Alfred`s cakes	Daldinia concentrica	fallen trunk Ash
White Saddle	Helvella crispa	litter Broad-leaved tree
	Hormotheca robertiani	living leaves Herb Robert
Beech Woodward	Hypoxylon fragiforme	fallen branch Beech
Hazel Woodward	Hypoxylon fuscum	standing dead Hazel
	Hypoxylon petriniae	fallen branch Ash
Coral spot	Nectria cinnabarina	fallen branch Broad-leaved tree
Bracken Map	Rhopoglyphus filicinus	dead stem bracken
Tar spot	Rhytisma acerinum	fallen leaves Sycamore
Holly Speckle	Trochila ilicina	dead leaf Holly
Candle snuff	Xylaria hypoxylon	fallen branch Broad-leaved tree
Dead Moll`s Fingers	Xylaria longipes	fallen branch Broad-leaved tree
Dead man`s fingers	Xylaria polymorpha	fallen trunk Broad-leaved tree
<b>Rusts</b>		
Violet Bramble Rust	Phragmidium violaceum III	living leaves bramble
	Puccinia glechomatis III	living leaves Ground Ivy
	Puccinia menthae III	living leaves Common Mint
<b>Fungi Imperfecti</b>		
	Colletotrichum liliacearum	stalk Bluebell

'Conditions were very dry, so the net total of 74 named species was well below what could have been recorded in mid-October. Mycorrhizal fungi were in very short supply, most species found being litter or dead wood saprophytes. However, of the 74, a grand 51 represent new records for this site – a most satisfying result. Although there are many 20<sup>th</sup> century records of Ascomycetes (the spore shooters) on the County database, there are big gaps in other groups, so it follows that many of the finds this year are of common species – very important baseline records and invaluable to beginners.' The following fungi are, however, more unusual:

*Abortiporus biennis occasional*

*Cortinarius amoenolens known from only 2 other Herefordshire sites*

*Cystolepiota adulterina known from only 4 other Herefordshire sites*

*Tephrocycbe rancida occasional, 'rooting' into deep litter*

*Tricholoma cingulatum known from only 2 other Herefordshire sites, a willow associate*

*Thelephora spiculosa known from only 1 other Herefordshire site*

**This is a site with great potential for fungi, especially the areas of beech woodland.**